



# SEPA

MÜHENDİSLİK & MÜŞAVİRLİK  
ENGINEERING & CONSULTING



# SEPA

**2020**  
**CATALOG**

[www.sepaproje.com](http://www.sepaproje.com)



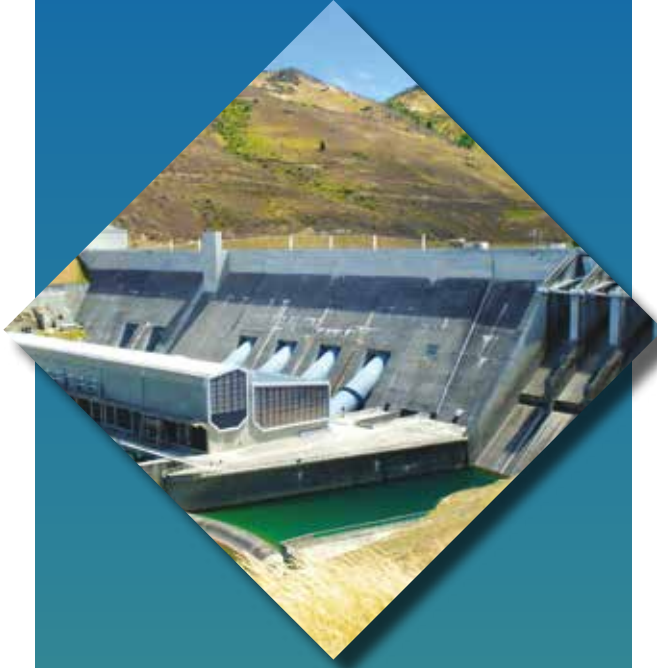
## About Us

Since its establishment on 11 July 1990, SEPA has carried out numerous projects, and is one of the leader engineering and consultancy companies in our country. Our company takes on important tasks in realizing international big scaled projects and also maintains its development in this field.

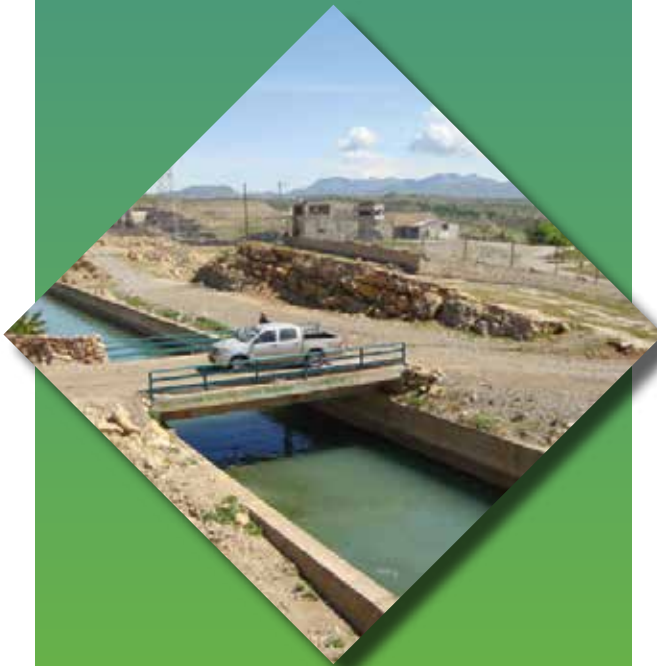
SEPA is a big family with the Experienced Civil Engineers, Mechanical, Electricity, Environmental, Survey, Geology and Agriculture Engineers, Technicians/Draftsmen and a number of staff charged in various administrative tasks.

We know that the numeral growths are not reason but result of the permanent achievements. We aim to show our leader and innovative power with the innovations we bring to the sector, expertise and service quality we provide. In this sense, SEPA will continue to move toward becoming the best with its experienced staff, knowledge, innovative applications in the engineering and consultancy services.

We are excited and proud of appearing before you more powerful than in yesterday. We would like to thank you for your full faith and credit that carried us to this point and would like this to be known that our priority is, as always, you, our customers.



SEPA aims at to guide you to convert your investment decisions into reality and at all necessary technical, legal and administrative steps.

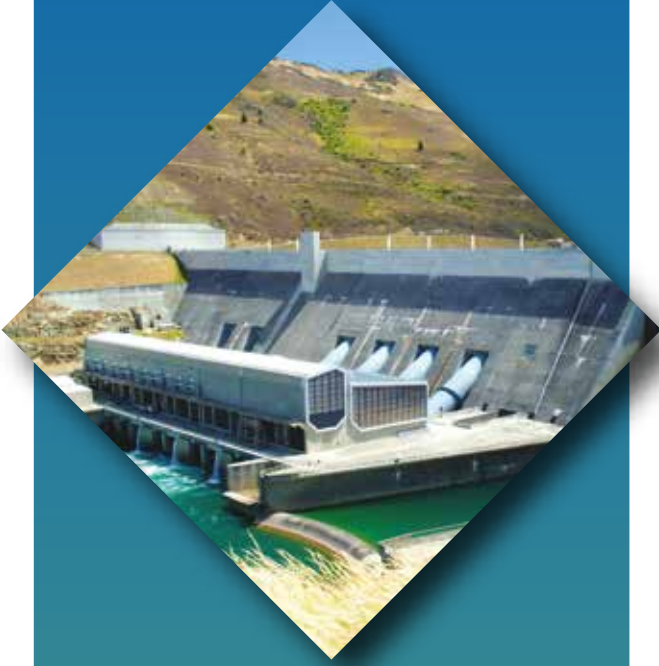


## History

In July 1990, SEPA started put with the approach of “from universal principles to the solutions specific to you”, and became more powerful upon merging with MET PROJE in 2011. The synergy, arising from this merging, brought us to a position where we look to the future with confidence and become more assertive. Our company, from its establishment until today, has grown upon progressing step by step as a result of implementing the quality targets uncompromisingly at every stage of services which we provided. We also would like to thank all our colleagues one by one who were contributing efforts within this process.

SEPA has taken various tasks in the projects related to its profession by realizing a number of public investments under the Ministry of National Education, Ministry of Energy, Ministry of Environment and Forest and various Governorships. In addition, SEPA has completed numerous projects with the private sector since its establishment.

SEPA will continue to provide the service with its experienced staff on which both public and private sector customers reach to their investment targets. We wish to create value add by providing integrated solutions in the most complex tasks and to make contribution to creating a better future by providing service to our customers within an understanding of business partnership.



# Quality Policy

Our quality notion may be summarized as “making the best of what we do”. SEPA, having the ISO quality certificate, adopts the quality policy as follows;

Meeting the customer satisfaction and expectations unconditionally

Producing fast, timely and correct service

Implementing the up-to-date quality standards at every stage of services

Maintaining the intra-company training policy at every level

Continuous research, development and improvement

Attaching importance to team work in order to enhance quality, productivity and profitability

Meeting the requirements of international, national and local environmental policies, and environmental management standards regarding our activity fields

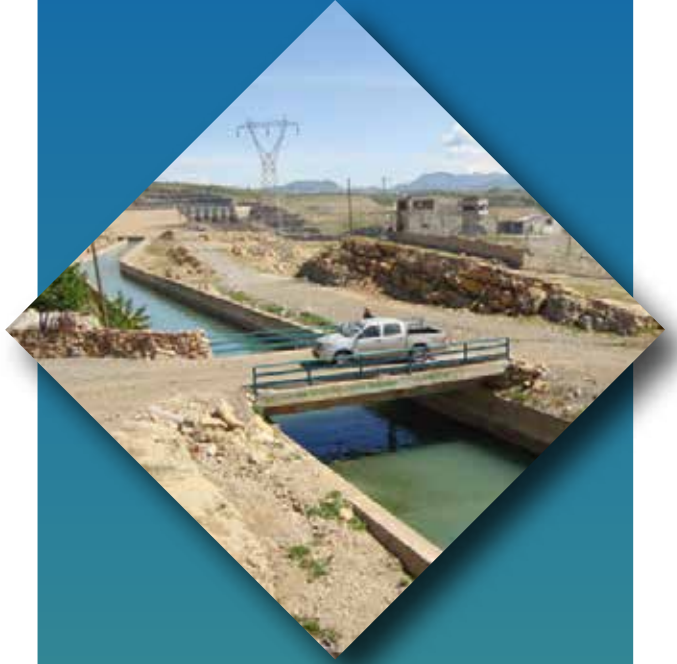
Acting by considering that the “most valuable source is the human”.

[www.sepaproje.com](http://www.sepaproje.com)



# Technology

The infrastructure necessary to provide the services requested by the customer fast, timely and faultless was established. To this end, many professional computation and drawing software and general purposed software are used. By this software, all calculation techniques and simulation of physical processes are possible. In order to enhance its design capacity and quality, SEPA produces the software required based on the project and puts it in service. We benefit from the advantages of modern technology by using all equipment, engineering tools and equipment and test devices.



The investments you are going to realize owing to our experiences without turning into adventure, they shall turn into realistic and reliable investment.



# IRRIGATION & DRAINAGE

Our company has a significant amount of knowledge on;

- Irrigation Dams, Ponds and Regulators
- Open channel and all the spring-estuary controlled art structures over it
- Galleria, Tunnel, Siphon, Aqueduct and similar Transmission Structures
- Piped Irrigation Systems
- Sprinkling and Dripping Irrigation Systems
- Pump Stations, Bridges
- Drainage Channels
- Flood Structure, Precipitation Dam, Flood Detention Dam, Berm, Cutwater, Bed Arrangement
- Geotechnical surveys and map procurement for all structures and has proven itself with an experience spanning more than 20 years on providing impeccable engineering services on all subjects related to "irrigation". We are honoured to be contributing to our country's socioeconomic development by carrying out important projects.

Sepa executes the Irrigation and Drainage projects within the following order:

1. STAGE: Preliminary Report
2. STAGE: Preparing the Pre-Application Projects
3. STAGE: Preparing the Projects Based on the Application
4. STAGE: Studying the Location of Application Project Routes and Art Structures , based on Detailed Application, Preparing the Measurements
5. STAGE: Preparing the Green File, Application Project and Credit Application Reports of the works , Preparing the Project's Original Map Sections and Calculations

# SEPA



The investments you are going to realize owing to our experiences without turning into adventure, they shall turn into realistic and reliable investment.



# PLANNING

Our company develops single or multipurpose projects for;

- Drinking, Utility and Industrial Water Acquirement-Distribution
- Sewer and Rainwater Drainage
- Utility water purification
- Waste water purification
- Irrigation and drainage systems
- Dams and hydroelectric energy generation
- Flood protection and control
- Establishing housing estates and successfully executes the planning to confirm their practicability, in terms of Preliminary Survey, Master Plan and technical and economic aspects.

During the survey and planning stage, final projects for the technically and economically approved investments are prepared, followed by the application project stage. All kinds of controlling and technical consultancy services during the following procurement and construction periods are also provided by our company.

Data collection activities during all the above processes are performed through a coordinated work between the following specialties, which are all an engineering discipline on its own:

- Observation
- Surveying
- Earth and Drainage
- Agricultural Economy
- Hydrology
- Environmental Impact Assessments
- Population and Urban Planning

During the survey and planning stage, final projects and application projects are prepared for the technically and economically approved investments by using 1/5.000, 1/2.000, and 1/1.000 scale maps.



Its partners or employees do not have direct or indirect partnership in any project which might create completion on the national and international market.



# ENERGY

Our company is highly experienced on the below subjects;

- Energy Dams and Hydroelectric Power Plants
- Open Channel, Galleria, Tunnel, Siphon, Aqueduct and similar energy oriented

Transmission Structures

- Fore bays and forced pipes
- Regulator and all types of rotary structures
- Hydroelectric plants and turbine-generators as well as electromechanic equipment

projects for all kinds of power systems

- Geotechnical surveys and map procurement for all structures

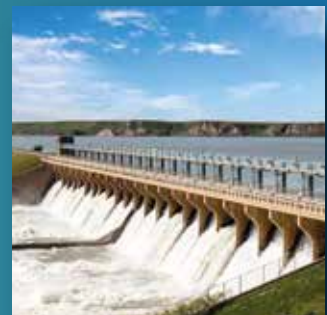
And is providing all kinds of engineering services related to “energy”. Many projects of the energy sector, executed under the scope of Law 4628 in recent years to diminish our country’s external dependence on energy, have been executed by our company.

Sepa has been successfully providing the following engineering and consultancy services within the scope of energy projects.

1. STAGE: Geology
2. STAGE: Material Research
3. STAGE: Construction Works, Static and Concrete-Reinforcement Calculations
4. STAGE: Hydraulic Calculations
5. STAGE: Hydraulic Equipment Project Calculations
6. STAGE: Construction Planning
7. STAGE: Construction Cost Estimate
8. STAGE: Special Survey Report
  - Seismic Risk Assessment Report
  - Spillway Hydraulic Model Report
  - Surface and Rock Mechanics Experiments Report
  - Other Necessary Special Experiment Reports
9. STAGE: Technical Specifications



We know that the numeral growths are not reason but result of the permanent achievements. We aim to show our leader and innovative power with the innovations we bring to the sector, expertise and service quality we provide.





# URBAN INFRASTRUCTURE

Being aware that our country is lacking the resources to overcome the urban infrastructure problems in a short period of time, the main purpose of our company within this field of activity is to provide effective and economic solutions to our problems, through correct assessment of problems, scientific and smart planning and management, by monitoring the scientific and technologic innovations related to systematic approaches and urban infrastructure applications, hence increasing the life quality in urban areas in a sustainable manner.

Resolving the urban infrastructure problems is possible through harmonized and coordinated interdisciplinary cooperation between Civil Engineering, Urban and Regional Planning, Architecture, Environmental Engineering, other engineering branches, as well as the relevant expertise areas of Social Sciences.

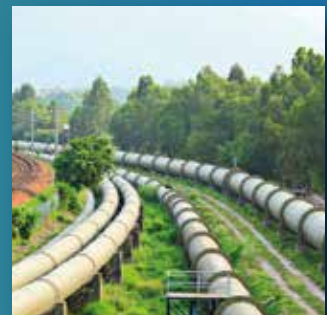
With an experience spanning over 20 years, SEPA will continue towards creating better cities in terms of "Urban Infrastructure"; by creating the interdisciplinary cooperation environment in a constant and consistent manner.

# SEPA

We have been adopting the perception of working feeling responsibility from the outcomes of the services we produced.



We have been adopting the perception of working feeling responsibility from the outcomes of the services we produced.



# POTABLE WATER AND WASTE WATER

The water being the source of life can pose a threat to the public health because of pollution of water sources and using without being treated. The water for life can service to the consumers when being clean and healthy. To get under control of diseases arising from water can be possible with taking necessary measures until water is receiving to consumers' taps from water sources. Therefore, increasing pollution of water resources and having 1.5-2 % annual population growth in our country are increasing the need for potable water and requiring by application of water treatment technologies to generate potable water in accordance with the norms and standards of the European Union and Turkish.

Our company provides projecting and consultancy services with long time experiences and qualified and experienced technical staff in the national and international projects about water supply, potable water treatment technologies (conventional water treatment plants, pressure filtrations and advanced treatment techniques), disinfection systems, water pipelines, potable water storage tanks, pumping stations, waste water treatment plants and sludge disposal. In addition, special technical issues are performed in cooperation with the university expertise, when necessary.

# SEPA

We have been adopting the perception of working feeling responsibility from the outcomes of the services we produced.



SEPA pays importance to multidisciplinary teamwork and use of modern technology



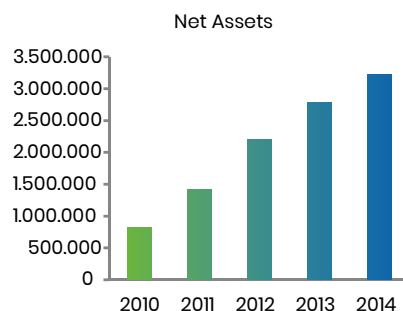
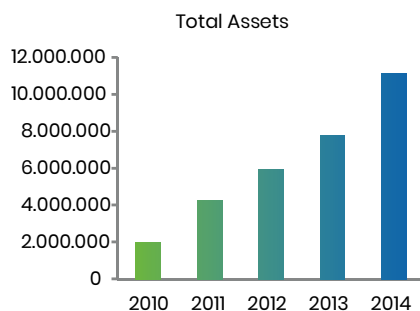
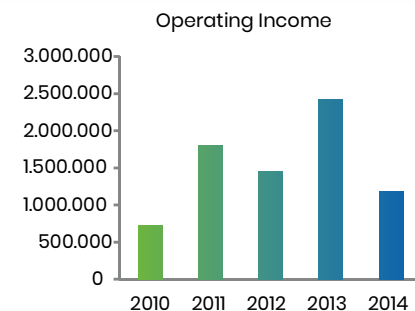
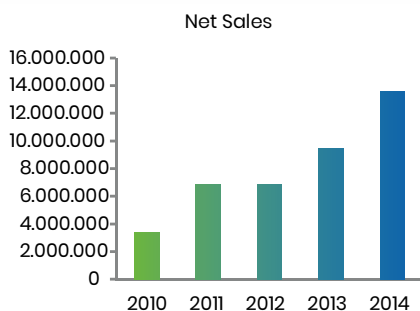
# CONSOLIDATED PERFORMANCE HIGHLIGHTS

U.S. Dollars

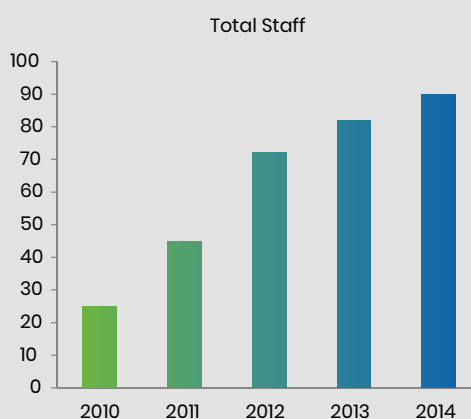
For the Year	2010	2011	2012	2013	2014
<b>Net Sales</b>	3.364.890,94	6.877.125,94	6.849.159,88	9.476.139,77	13.587.323,05
<b>Operating Income</b>	729.052,59	1.801.497,83	1.451.808,79	2.425.032,96	1.188.938,68
<b>Income Before Income Taxes</b>	500.152,07	1.127.449,95	983.980,85	729.204,42	571.080,86
<b>Net Income</b>	398.063,43	868.751,03	785.742,46	378.410,18	452.584,70

**At Year - And**

<b>Total Assets</b>	1.962.497,05	4.278.532,50	5.928.500,44	7.780.475,40	11.134.226,37
<b>Net Assets</b>	817.834,69	1.416.230,89	2.203.361,58	2.785.557,81	3.228.078,28



Total staff					
2010	2011	2012	2013	2014	
25	45	72	82	90	



SE

PA

# REFERENCES

## **Batman Dam Left Bank Irrigation and Operational Facilities Project**

Employer: GÜNFER Joint Venture

Location: Batman, Turkey

Description of Work: Main canal, upstream controlled for 65 km and downstream controlled for 63 km, 3 pumping stations, 23 syphons, 78 bridges, pipe network for 18.917 ha irrigation area

Type of Work: Application Project,

## **Batman Dam Right Bank Irrigation Project**

Employer: FERNAS İnşaat A.Ş.

Location: Batman, Turkey

Description of Work: Main canal of 140 km length, 1 aqueduct, 12 tunnels, 67 bridges, and pipe network for 20.522 ha irrigation area

Type of Work: Application Project

## **Devrekani Kulaksızlar Irrigation Planning Revision and Design Based On Application**

Employer: State Hydraulic Works 23rd Regional Directorate

Location: Kastamonu, Turkey

Description of Work: Planning report, 4.987 ha pipe network and regulator

Type of Work: Planning and Application Project,

## **İskenderun Potable water Design**

Employer: State Hydraulic Works 6th Regional Directorate

Location: Hatay, Turkey

Description of Work: Treatment Plant, 9 tanks, 5 pumping stations, 46.650 m transmission line

Type of Work: Application Project

## **Syria - Aleppo Quaik River Pumping Station**

Employer: Süperlit Boru ve Levha Sanayi A.Ş.

Location: Aleppo, Syria

Description of Work: 4 m/s, H=70 m capacity pumping station and 6.500 m pressure pipe network

Type of Work: Application Project

## **Garzan-2, Garzan-3 and Garzan-4 Regulators Feasibility Report**

Employer: FERNAS İnşaat A.Ş.

Location: Batman, Turkey

Description of Work: Preparation of feasibility report for Regulator and HEPP facilities

Type of Work: Planning

## **Şirvan Dam and Hydroelectric Power Plant**

Employer: FERNAS İnşaat A.Ş.

Location: Siirt, Turkey

Description of Work: Clay-core rock-fill type dam with 77 m height from bottom and 69 m height from thalweg, 4.250 m energy tunnel and HEPP with 30 MW installed power

Type of Work: Planning and Application Project

## **Ankara Haymana Türkşerefli Pond Dam and Irrigation Project**

Employer: State Hydraulic Works 5th Regional Directorate

Location: Ankara, Turkey

Description of Work: Clay-core, rock-fill pond dam of H=32 m height, and pipe network for 787 ha irrigation area

Type of Work: Application Project

## **Eruh Dam and Hydroelectric Power Plant Feasibility Report**

Employer: FERNAS İnşaat A.Ş.

Location: Siirt, Turkey

Description of Work: Preparation of feasibility report for Dam and HEPP facilities

Type of Work: Planning

## **Bilecik Kurtköy Pond Planning Revision and Irrigation Project**

Employer: State Hydraulic Works 3rd Regional Directorate

Location: Bilecik, Turkey

Description of Work: 597 ha pipe network

Type of Work: Application Project,

1

2

3

4

5

6

7

8

9

10

11

**Bilecik Söğüt Dereboyu (Zeyve) Pond Irrigation Project**

Employer: State Hydraulic Works 3rd Regional Directorate

Location: Bilecik, Turkey

Description of Work: 288 ha pipe network

Type of Work: Application Project,

12

**Final Design of Tekirdağ-Malkara Karacahali Pond Irrigation**

Employer: State Hydraulic Works 11th Regional Directorate

Location: Tekirdağ, Turkey

Description of Work: 130 ha pipe network

Type of Work: Application Project,

13

**Final Design of Edirne Keşan Karlıköy Pond Irrigation**

Employer: State Hydraulic Works 11th Regional Directorate

Location: Edirne, Turkey

Description of Work: 93 ha pipe network

Type of Work: Final Design,

14

**Çankırı Eldivan Sarayköy-II Dam Application Project**

Employer: State Hydraulic Works 5th Regional Directorate

Location: Çankırı, Turkey

Description of Work: Preparation of application projects for irrigation purpose dam 33 meters high from thalweg

Type of Work: Application Project,

15

**Hatay Hassa Demrek Pond Irrigation**

Employer: State Hydraulic Works 6th Regional Directorate

Location: Hatay, Turkey

Description of Work: 280 ha pipe network and spillway bridge application project

Type of Work: Application Project,

16

**Kırıkkale Central Hasandede Pond Irrigation**

Employer: State Hydraulic Works 5th Regional Directorate

Location: Kırıkkale, Turkey

Description of Work: 419 ha pipe network

Type of Work: Application Project,

17

**Denizli Çal İsabey Drip Irrigation Project**

Employer: State Hydraulic Works 21st Regional Directorate

Location: Denizli, Turkey

Description of Work: 325 ha pipe network

Type of Work: Application Project,

18

**Afyonkarahisar Dinar Kuruçay Pond Irrigation Planning Report and Application Design**

Employer: State Hydraulic Works 18th Regional Directorate

Location: Afyonkarahisar, Turkey

Description of Work: 2.180 ha pipe network

Type of Work: Planning and Application Project

19

**Bursa İznik Mahmudiye Pond and Irrigation Project**

Employer: State Hydraulic Works 1. Regional Directorate

Location: Bursa, Turkey

Description of Work: Pond and 425 ha pipe network

Type of Work: Application Project,

20

**Aksaray Province Solid Waste Transfer Station Projects**

Employer: Special Environmental Protection Board

Location: Aksaray, Turkey

Description of Work: 3 solid waste transfer stations at Acıpınar and Eşmekaya counties and GüzelyurtSelime Town

Type of Work: Application Project,

21

22

23

24

25

26

27

28

29

30

**Rostov Residence Complex Application Project**

Employer: Altu Mimarlık  
Location: Russia Federation  
Description of Work: 40.000 m2 reinforced concrete residence and trade building  
Type of Work: Application Project

**Ekaterinburg Residence Complex Application Project**

Employer: Uz Mimarlık  
Location: Russia Federation  
Description of Work: 2.500 m2 reinforced concrete residence building  
Type of Work: Application Project

**Ekaterinburg Business Center Project**

Employer: Uz Mimarlık  
Location: Russia Federation  
Description of Work: 18.000 m2 trade building  
Type of Work: Application Project

**Ekaterinburg SPA Complex Application Project**

Employer: Uz Mimarlık  
Location: Russia Federation  
Description of Work: 6.000 m2 SPA and Sports Facility  
Type of Work: Application Project

**Perm Shopping Center Project**

Employer: Uz Mimarlık  
Location: Russia Federation  
Description of Work: 30.000 m2 Shopping Center  
Type of Work: Application Project

**Ufa Shopping Center Application Project**

Employer: Structoris Co.  
Location: Russia Federation  
Description of Work: 6.000 m2 trade center  
Type of Work: Application Project

**Vologda Wellness Center Project**

Employer: Structoris Co.  
Location: Russia Federation  
Description of Work: 100.000 m2 wellness complex  
Type of Work: Preliminary and Application Project

**Lokman Hekim Hospital Project**

Employer: Altu Mimarlık  
Location: Ankara, Turkey  
Description of Work: 20.000 m2 hospital project  
Type of Work: Application Project

**Polatlı Private Hospital Project**

Employer: Altu Mimarlık  
Location: Ankara, Turkey  
Description of Work: 5.000 m2 reinforced concrete building  
Type of Work: Application Project,

**Sasan Sağlık Hizm. Ltd. Şti. Factory and Storage Building Project**

Employer: Altu Mimarlık  
Location: Ankara, Turkey  
Description of Work: 5.000 m2 reinforced concrete storage building  
Type of Work: Application Project,

### **Mavi Yıldırım Housing Cooperative Project**

Employer: Mavi Yıldırım Housing Cooperative  
Location: Ankara, Turkey  
Description of Work: Residence Building with 40 apartments  
Type of Work: Application Project,

### **Özgürevren Housing Cooperative Project**

Employer: Özgürevren Housing Cooperative  
Location: Ankara, Turkey  
Description of Work: Residence building with 40 apartments  
Type of Work: Application Project, t

### **Treysan Factory Building Project**

Employer: Gri Mimarlık  
Location: Ankara, Turkey  
Description of Work: 6.000 m2 steel construction factory building  
Type of Work: Application Project,

### **Revised Planning Report and Engineering Services for Edirne-Meriç Flood Protection Project**

Employer: State Hydraulic Works 11th Regional Directorate  
Location: Edirne, Turkey  
Description of Work: Preparation of planning report  
Type of Work: Planning

### **Kırşehir Special Administration Building Reinforcement Project**

Employer: Kırşehir Provincial Directorate of Public Works  
Location: Kırşehir, Turkey  
Description of Work: 2.500 m2 reinforcement administration building reinforcement  
Type of Work: Reinforcement Project

### **Turkish Coast Guard Command Public Housing Building Reinforcement Project**

Employer: Ankara Provincial Directorate of Public Works  
Location: Ankara, Turkey  
Description of Work: 1.000 m2 reinforced concrete residence building  
Type of Work: Reinforcement Project

### **Etlük Police Station Reinforcement Project**

Employer: Ankara State Directorate of Public Works  
Location: Ankara, Turkey  
Description of Work: Reinforcement of 1.500 m2 building with reinforced concrete  
Type of Work: Application Project

### **Hatay Karaçay Dam Irrigation Project**

Employer: State Hydraulic Works 6th Regional Directorate  
Location: Hatay, Turkey  
Description of Work: Pipe network for 3.554 ha irrigation area  
Type of Work: Application Project

### **Planning Report and Design of Burdur Tefenni Çaylı Pond Dam and Irrigation**

Employer: State Hydraulic Works 18th Regional Directorate  
Location: Burdur, Turkey  
Description of Work: Clay-core, rock-fill dam with H=34.5 m height on Çaylı Pond, and 418 ha irrigation area  
Type of Work: Planning and Application Project

### **Planning Report and Design of Burdur Province Ponds and Irrigations**

Employer: State Hydraulic Works 18th Regional Directorate  
Location: Burdur, Turkey  
Description of Work: Membrane-core, rock-fill dam with H=31 m height on Aziziye Pond, and 309 ha irrigation area  
Type of Work: Planning and Application Project

41

**Planning Report and Design of Burdur Province Ponds and Irrigations**

Employer: State Hydraulic Works 18th Regional Directorate

Location: Burdur, Turkey

Description of Work: Membrane-core, zoned embankment dam with H=25.25 m height on İbecik Pond, and 267 ha irrigation area

Type of Work: Planning and Application Project

42

**Planning Report and Design of Burdur Province Ponds and Irrigations**

Employer: State Hydraulic Works 18th Regional Directorate

Location: Burdur, Turkey

Description of Work: Membrane-core, rock-fill dam with H=32 m height on Çamlık Pond, and 388 ha irrigation area

Type of Work: Planning and Application

43

**Planning Report and Design of Burdur Province Ponds and Irrigations**

Employer: State Hydraulic Works 18th Regional Directorate

Location: Burdur, Turkey

Description of Work: Membrane-core, rock-fill dam with H=26 m height on Söğüt Pond, and 837 ha irrigation area

Type of Work: Planning and Application Project

44

**Antalya Gazipaşa Plain Irrigation and Expropriation Planning**

Employer: State Hydraulic Works 13th Regional Directorate

Location: Antalya, Turkey

Description of Work: Pipe network for 4.883 ha irrigation area

Type of Work: Application Project

45

**Design of 2nd Section of Groundwater Irrigation Networks**

Employer: State Hydraulic Works 18th Regional Directorate

Location: Isparta, Turkey

Description of Work: Pipe network for 2.080 ha irrigation area in Emirdağ and Şuhut counties of Afyonkarahisar.

Type of Work: Application Project

46

**Planning Report and Design of 1st Section of Afyonkarahisar Province Ponds and Irrigations**

Employer: State Hydraulic Works 18th Regional Directorate

Location: Afyonkarahisar, Turkey

Description of Work: Membrane-core, zoned embankment dam with H=28 m height on Başmakçı Yaka Pond, and 362 ha irrigation area

Type of Work: Planning and Application Project

47

**Planning Report and Design of 1st Section of Afyonkarahisar Province Ponds and Irrigations**

Employer: State Hydraulic Works 18th Regional Directorate

Location: Afyonkarahisar, Turkey

Description of Work: Homogeneous embankment dam with H=16 m height on Yeşilhisar Pond, and 289 ha irrigation area

Type of Work: Planning and Application Project

48

**Planning Report and Design of 1st Section of Afyonkarahisar Province Ponds and Irrigations**

Employer: State Hydraulic Works 18th Regional Directorate

Location: Afyonkarahisar, Turkey

Description of Work: Clay-core, rock-fill dam with H=30.5 m height on Nuh Taşoluk Pond, and 563 ha irrigation area, Type of Work: Planning and Application Project

Type of Work: Planning and Application Project

49

**Planning Report and Design of 1st Section of Afyonkarahisar Province Ponds and Irrigations**

Employer: State Hydraulic Works 18th Regional Directorate

Location: Afyonkarahisar, Turkey

Description of Work: Clay-core, rock-fill dam with H=36 m height on Kızık Pond, and 560 ha irrigation area, Type of Work: Planning and Application Project

Type of Work: Planning and Application Project

50

**Planning Report and Design of 1st Section of Afyonkarahisar Province Ponds and Irrigations**

Employer: State Hydraulic Works 18th Regional Directorate

Location: Afyonkarahisar, Turkey

Description of Work: Clay-core, rock-fill dam with H=23 m height on Koçgazi Pond, and 108 ha irrigation area, Type of Work: Planning and Application Project

Type of Work: Planning and Application Project



51

**Planning Report and Design of 3rd Section of Afyonkarahisar Province Ponds and Irrigations**

Employer: State Hydraulic Works 18th Regional Directorate

Location: Afyonkarahisar, Turkey

Description of Work: Eber embankment regulator, and 143 ha irrigation area

Type of Work: Planning and Application Project Type of Work: Application Project,

52

**Planning Report and Design of 3rd Section of Afyonkarahisar Province Ponds and Irrigations**

Employer: State Hydraulic Works 18th Regional Directorate

Location: Afyonkarahisar, Turkey

Description of Work: Clay-core, rock-fill dam with H=38.5 m height on Karamik Pond, and 396 ha irrigation area, Type of Work: Planning and Application Project Type of Work: Application Project,

53

**Planning Report and Design of 3rd Section of Afyonkarahisar Province Ponds and Irrigations**

Employer: State Hydraulic Works 18th Regional Directorate

Location: Afyonkarahisar, Turkey

Description of Work: Clay-core, aggregate-fill dam with H=28.5 m height on Sinanpaşa Pond, and 987 ha irrigation area, Type of Work: Planning and Application Project, Type of Work: Final Design,

54

**Planning Report and Design of 3rd Section of Afyonkarahisar Province Ponds and Irrigations**

Employer: State Hydraulic Works 18th Regional Directorate

Location: Afyonkarahisar, Turkey

Description of Work: Clay-core, rock-fill dam with H=24.5 m height on Çakırözü Pond, and 345 ha irrigation area, Type of Work: Planning and Application Project, Type of Work: Application Project,

55

**Planning Report and Design of 3rd Section of Afyonkarahisar Province Ponds and Irrigations**

Employer: State Hydraulic Works 18th Regional Directorate

Location: Afyonkarahisar, Turkey

Description of Work: Clay-core, rock-fill dam with H=28 m height on Aydın Pond, and 306 ha irrigation area

Type of Work: Planning and Application Project, Type of Work: Application Project,

56

**Planning Report and Design of 3rd Section of Afyonkarahisar Province Ponds and Irrigations**

Employer: State Hydraulic Works 18th Regional Directorate

Location: Afyonkarahisar, Turkey

Description of Work: Clay-core, rock-fill dam with H=37 m height on Yedikapı Pond, and 544 ha irrigation area, Type of Work: Planning and Application Project,

57

**Design of 1st Section of Afyonkarahisar Province Ponds and Irrigations**

Employer: State Hydraulic Works 18th Regional Directorate

Location: Afyonkarahisar, Turkey

Description of Work: Clay-core, rock-fill dam with H=25 m height on Balçıkhisar Pond, and 391 ha irrigation area, Type of Work: Application Project

58

**Design of 1st Section of Afyonkarahisar Province Ponds and Irrigations**

Employer: State Hydraulic Works 18th Regional Directorate

Location: Afyonkarahisar, Turkey

Description of Work: Zoned earth-fill dam with H=23.5 m height on Karaağaç pond, and 256 ha irrigation area, Type of Work: Application Project

59

**Design of 1st Section of Afyonkarahisar Province Ponds and Irrigations**

Employer: State Hydraulic Works 18th Regional Directorate

Location: Afyonkarahisar, Turkey

Description of Work: Clay-core, rock-fill dam on Haydarlı Pond, and 446 ha irrigation area  
Type of Work: Application Project

60

**Büğdüz Pond of Central Burdur and Irrigation Project**

Employer: State Hydraulic Works 18th Regional Directorate

Location: Isparta, Turkey

Description of Work: Membrane-core, earth-fill dam with H=36 m height on Büğdüz Pond, and 328 ha irrigation area  
Type of Work: Application Project

### **Bingöl Karlıova Kale Pond Irrigation Project and Expropriation Planning**

Employer: State Hydraulic Works 9th Regional Directorate  
Location: Bingöl, Turkey  
Description of Work: 1.194 ha piped surface irrigation  
Type of Work: Application Project

### **Bursa MustafaKemal Paşa Döllük Irrigation and Devcikonağı Pumped Irrigation**

Employer: State Hydraulic Works 1st Regional Directorate  
Location: Bursa, Turkey  
Description of Work: 1.445 ha pipe network and pumping station  
Type of Work: Application Project

### **Improvement of Amik - Tahta Köprü Asi River**

Employer: Doğan AKSEL  
Location: Antakya, Turkey  
Description of Work: Flood Protection Project  
Type of Work: Application Project

### **Ceyhan Sarıkız Osmaniye Yuvarlaklı Irrigation**

Employer: Karagülle Koll. Şti.  
Location: Ceyhan, Turkey  
Description of Work: 1.700 ha low pressure pipe network  
Type of Work: Application Project

### **Gürpınar Gevaş Irrigation**

Employer: BM Müh. Ltd. Şti.  
Location: Van, Turkey  
Description of Work: 11.000 ha canal network  
Type of Work: Application Project

### **Haruniye Irrigation Bozluk Regulator**

Employer: AS+YET Joint Venture  
Location: Düziçi, Adana, Turkey  
Description of Work: Regulator Project  
Type of Work: Application Project

### **Y.Ceyhan Elbistan Irrigation**

Employer: Eren İnş. Ltd. Şti.  
Location: Elbistan, Turkey  
Description of Work: 3.500 ha concrete flume network  
Type of Work: Application Project

### **Gölcük Pond Dam**

Employer: AK İnş. Ltd. Şti.  
Location: Bursa, Turkey  
Description of Work: Pond Dam  
Type of Work: Application Project

### **O. Sakarya Pamukova Irrigation**

Employer: Yaşar ÖNCAN  
Location: Sakarya, Turkey  
Description of Work: 3.000 ha low pressure pipe network  
Type of Work: Application Project

### **Sluice Outlet and Spillway Project for Murtaza Dam**

Employer: Yaşar ÖNCAN  
Location: Aksaray, Turkey  
Description of Work: Sluice outlet and spillway of dam  
Type of Work: Application Project

61

62

63

64

65

66

67

68

69

70

71

#### **Final Design of Patnos Project Şekerova Irrigation**

Employer: State Hydraulic Works  
Location: Ağrı, Turkey  
Description of Work: 18.500 ha canal network  
Type of Work: Final Design

72

#### **Hasancık Pond Dam**

Employer: Ahmet AYDENİZ  
Location: Adıyaman, Turkey  
Description of Work: Pond dam and irrigation  
Type of Work: Final Design and Application Project

73

#### **Kızılıniş Pond Dam and Irrigation**

Employer: Ahmet AYDENİZ  
Location: Kahramanmaraş, Turkey  
Description of Work: Pond dam and irrigation  
Type of Work: Final Design and Application Project

74

#### **Sivas Divriği Irrigation**

Employer: NUR İnş. A.Ş.  
Location: Sivas, Turkey  
Description of Work: 2.700 ha canal network  
Type of Work: Application Project

75

#### **Murtaza Irrigation**

Employer: Yaşar ÖNCAN  
Location: Niğde, Turkey  
Description of Work: 1.100 ha canal network  
Type of Work: Application Project

76

#### **Garzan Kozluk Irrigation**

Employer: Doğan AKSEL  
Location: Diyarbakır, Turkey  
Description of Work: 3.600 ha canal network  
Type of Work: Application Project

77

#### **Daphan Transmission**

Employer: AK İnş. Ltd. Şti.  
Location: Erzurum, Turkey  
Description of Work: 13 km of water transmission line having a discharge of  $Q=29.7 \text{ m}^3 / \text{s}$   
Type of Work: Application Project

78

#### **Karahöyük Pond Dam**

Employer: Ahmet AYDENİZ  
Location: Adıyaman, Turkey  
Description of Work: Pond dam and irrigation  
Type of Work: Application Project

79

#### **Karaisalı Irrigation**

Employer: Doruk İnş.  
Location: Adana, Turkey  
Description of Work: 2.190 ha pipe network  
Type of Work: Application Project

80

#### **Construction of East Iğdır Irrigation - Section 4th**

Employer: BM Müh. İnş. ve Tic. Ltd. Şti.  
Location: Kars, Turkey  
Description of Work: 9.200 ha canal network  
Type of Work: Application Project

### **Çarşamba Plain Drainage**

Employer: Eren İnşaat Ltd. Şti.  
Location: Samsun, Turkey  
Description of Work: 24.000 ha drainage network  
Type of Work: Application Project

### **Darıdere Irrigation**

Employer: Edip GÜRCÜN  
Location: Eskişehir, Turkey  
Description of Work: 1.100 ha medium pressure pipe network  
Type of Work: Application Project

### **Kozviran Irrigation**

Employer: Karaca İnş. Tic. Ltd. Şti.  
Location: Banaz, Uşak, Turkey  
Description of Work: 550 ha high pressure network  
Type of Work: Application Project

### **Final Design of Biga-Taşoluk-Tahirova Irrigation**

Employer: General Directorate of State Hydraulic Works  
Location: Çanakkale, Turkey  
Description of Work: 14.242 ha high and medium pressure network  
Type of Work: Final Design

### **Kozviran Irrigation**

Employer: Karaca İnş. Tic. Ltd. Şti.  
Location: Banaz, Uşak, Turkey  
Description of Work: 550 ha high pressure network  
Type of Work: Application Project

### **Kireli Irrigation**

Employer: YÖNTAŞ A. Ş.  
Location: Konya, Turkey  
Description of Work: 8.900 ha low pressure pipe network  
Type of Work: Application Project

### **Dalyan Regulator**

Employer: Dokar İnş. Ltd. Şti.  
Location: Aydın, Turkey  
Description of Work: Dalyan regulator construction on Büyük Menderes River  
Type of Work: Application Project

### **Kesiksuyu Savrun**

Employer: Fevzi SOYKAN  
Location: Adana, Turkey  
Description of Work: 7.540 ha pipe network  
Type of Work: Application Project

### **Yeşilova Irrigation**

Employer: Yazıcıoğlu Ltd. Şti.  
Location: Burdur, Turkey  
Description of Work: Pumping station for 170 ha high pressure network  
Type of Work: Application Project

### **Rubber Dam**

Employer: Antakya Municipality  
Location: Hatay, Turkey  
Description of Work: Rubber Dam  
Type of Work: Application Project

81

82

83

84

85

86

87

88

89

90

**Aşağı Aksu – Stage 2nd**

Employer: KAZOVA A.Ş.  
Location: Antalya, Turkey  
Description of Work: 2.000 ha concrete flume network  
Type of Work: Application Project

**Bergama-Kınık Left Bank Irrigation**

Employer: Özdoğan İnş. Ltd. Şti.  
Location: İzmir, Turkey  
Description of Work: 6.600 ha pipe network  
Type of Work: Application Project

**Yumurtalık Plain Gravity Irrigation**

Employer: AK İnş. Ltd. Şti.  
Location: Adana, Turkey  
Description of Work: 6.500 ha low pressure pipe network  
Type of Work: Application Project

**Ermenek Dam and HEPP Construction Potable Water Application Project**

Employer: BM Mühendislik  
Location: Edirne, Turkey  
Description of Work: 2.168 m potable water transmission line and water tank  
Type of Work: Application Project

**Irrigation of Downstream Plains of Güzelhisar Dam Project**

Employer: State Hydraulic Works 2nd Regional Directorate  
Location: İzmir, Turkey  
Description of Work: 961 ha high pressure network and pumping station  
Type of Work: Final Design

**Final Design of Edirne Keşan Karlıköy Pond Irrigation**

Employer: Doğan AKSEL  
Employer: State Hydraulic Works 11th Regional Directorate  
Location: Edirne, Turkey  
Description of Work: 93 ha pipe network  
Type of Work: Final Design

**State Hydraulic Works 10th Regional Directorate Workshop Buildings Project**

Employer: State Hydraulic Works 10th Regional Directorate  
Location: Batman, Turkey  
Description of Work: Reinforced Concrete Workshop Building  
Type of Work: Application Project

**Ulubey Irrigation**

Employer: State Hydraulic Works 2nd Regional Directorate  
Location: Uşak, Turkey  
Description of Work: 120 ha high pressure network and pumping station  
Type of Work: Final Design

**Gönen Irrigation**

Employer: State Hydraulic Works 25th Regional Directorate  
Location: Balıkesir, Turkey  
Description of Work: 3.800 ha medium pressure network and pumping station  
Type of Work: Final Design

**Havran Irrigation**

Employer: State Hydraulic Works 25th Regional Directorate  
Location: Balıkesir, Turkey  
Description of Work: 3.300 ha medium pressure network and pumping station  
Type of Work: Final Design

### Garzan Dam and Hydroelectric Power Plant

Employer: FERNAS İnşaat A.Ş.

Location: Batman, Turkey

Description of Work: Clay-core, rock-fill type dam with 133 m height from bottom and 120 m height from thalweg and HEPP with 42 MW installed power

Type of Work: Application Project

### Sıddıklı Irrigation

Employer: Taşeli İnş. Ltd.Şti.

Location: Kırşehir, Turkey

Description of Work: 5.000 ha pipe network

Type of Work: Application Project

### Aytdere Irrigation

Employer: State Hydraulic Works 25th Regional Directorate

Location: Balıkesir, Turkey

Description of Work: 1.180 ha high pressure network and pumping station

Type of Work: Final Design

### Afyonkarahisar Kuruçay Pond Irrigation Application Project

Employer: State Hydraulic Works 18th Regional Directorate

Location: Afyonkarahisar, Turkey

Description of Work: 682 ha pipe network

Type of Work: Application Project

### İŞ-KUR Central Building Design

Employer: Altu Mimarlık

Location: Ankara, Turkey

Description of Work: 18.000 m2 reinforced concrete administration building

Type of Work: Application Project

### Uşak Sivaslı Yayalar Underground Water Irrigation

Employer: State Hydraulic Works 2nd Regional Directorate

Location: Uşak, Turkey

Description of Work: 136 ha high pressure network and pump pits

Type of Work: Final Design

### Afyonkarahisar Merkez Akarçay Improvement Design

Employer: State Hydraulic Works 18th Regional Directorate

Location: Afyonkarahisar, Turkey

Description of Work: Improvement of Akarçay, renewal of existing bridges, flood protection analysis, control structure, design of side regulator structures

Type of Work: Application Project

### Valvaç Kurusarı Pond Irrigation Project

Employer: State Hydraulic Works 18th Regional Directorate

Location: Isparta, Turkey

Description of Work: 673 ha pipe network

Type of Work: Application Project

### Afyonkarahisar Çayüstü Pond and Irrigation Planning Report and Design

Employer: State Hydraulic Works 18th Regional Directorate

Location: Afyonkarahisar, Turkey

Description of Work: Clay-core, rock-fill dam with H=20.5 m height on Çayüstü Pond, and 504 ha irrigation area

Type of Work: Planning and Application Project

### Zonguldak Ereğli State Hospital Project with 350 Bed Capacity

Employer: Altu Mimarlık

Location: Zonguldak, Turkey

Description of Work: 50.000 m2 hospital with 350 bed capacity

Type of Work: Application Project

101

102

103

104

105

106

107

108

109

110

111

**Yeni Karpuzlu Irrigation**

Employer: YAPSAN-NVS Joint Venture  
Location: Edirne, Turkey  
Description of Work: 3.500 ha canal network  
Type of Work: Application Project

112

**Sultanköy Irrigation**

Employer: EREN İnş. Ltd. Şti.  
Location: Edirne, Turkey  
Description of Work: 7.770 ha canal network  
Type of Work: Application Project

113

**Kılavuzlu Irrigation**

Employer: Mehmet GÜNEŞ İnşaat  
Location: Kahramanmaraş, Turkey  
Description of Work: 9.600 ha pipe network  
Type of Work: Application Project

114

**Altınova – Dikili Irrigation**

Employer: Alptekin İnş. Ltd.Şti.  
Location: Balıkesir, Turkey  
Description of Work: 8.500 ha pipe network  
Type of Work: Application Project

115

**Central Yakaören Pond Irrigation Project**

Employer: State Hydraulic Works 15th Regional Directorate  
Location: Şanlıurfa, Turkey  
Description of Work: Pond and irrigation with 569 ha pipe network  
Type of Work: Application Project

116

**Mardin Ceylanpınar Main Channel – Section 3rd**

Employer: EREN İnş. Ltd.Şti.  
Location: Mardin, Turkey  
Description of Work: 63 km main channel  
Type of Work: Application Project

117

**Şanlıurfa – Çamurlu Pond and Irrigation Project**

Employer: State Hydraulic Works 15th Regional Directorate  
Location: Şanlıurfa, Turkey  
Description of Work: Pond and irrigation with 569 ha pipe network  
Type of Work: Application Project

118

**Revision of Kastamonu–Daday Bezirgan Hazım Kılıç Pond Irrigation Planning Report**

Employer: State Hydraulic Works 23rd Regional Directorate  
Location: Kastamonu, Turkey  
Description of Work: Preparation of Planning Report  
Type of Work: Planning

119

**Aksu Koçular Pond Irrigation Project**

Employer: State Hydraulic Works 18th Regional Directorate  
Location: Isparta, Turkey  
Description of Work: 292 ha pipe network  
Type of Work: Application Project

120

**Şanlıurfa Conventional Potable Water Treatment Plant (nominal capacity = 270 000 m<sup>3</sup>/day)**

Employer: State Hydraulic Works Water Supply Department  
Contractor: E.M.I.T. S.p.A. + Sistem Yapı İnş. ve Tic. A.Ş.  
Location: Şanlıurfa, Turkey  
Description of Work: Project control, site visits and supervision of works and supervising of taking into operation of treatment plant Type of Work: Final Design

### **İstanbul-Cumhuriyet Conventional Potable Water Treatment Plant (nominal capacity = 720000 m3/day)**

Employer: State Hydraulic Works Water Supply Department

Contractor: LİMAK İnşaat ve San. Tic. AŞ

Location: İstanbul, Turkey

Description of Work: Project control, site visits and supervision of works and supervising of taking into operation of treatment plant

### **Elazığ Conventional Potable Water Treatment Plant (nominal capacity = 160 000 m3/day)**

Employer: State Hydraulic Works Water Supply Department

Location: Elazığ, Turkey

Description of Work: Process and Hydraulic design, functional, mechanical, electrical, architectural and construction application project preparation

Type of Work: Application Project

### **Sivas-Şarkışla Conventional Potable Water Treatment Plant (nominal capacity = 21 000 m3/day)**

Employer: State Hydraulic Works Water Supply Department

Location: Sivas-Şarkışla, Turkey

Description of Work: Process and Hydraulic design, functional, mechanical, electrical, architectural and construction application project preparation

Type of Work: Application Project

### **Şirvan Dam HEPP and Irrigation Network Project**

Employer: General Directorate Of State Hydraulic Works/Nas Enerji A.Ş.

Location: Siirt /Turkey

Description of Work: A Dam Body of Clay Core Rock Fill Type; Preparation of 30 Mw HEPP and Irrigation system projects

Type of Work: Feasibility Report / Application Project

### **Kars River Basin 2nd Stage Project "Kars Alabalık Dam and Irrigation Planning and Feasibility Report Engineering Services.**

Employer: General Directorate Of State Hydraulic Works/Turkey

Location: Kars /Turkey

Description of Work: The Objective of this Tor are to prepare a Feasibility study Kars Alabalık Dam.

The reservoir will be hydraulic structure which could be delisted/cleaned easily incorporating least expenditure ,it will contributed for decreasing the gap between demand and supply of power in winters, Resultantly the scheme will boost up socio Economic conditions.

Type of Work: Feasibility Report

### **Bahçecik Dam Project. all geological surveys, price determinations and final calculations (RCC Dam And Clean Water Treatment Plant)**

Employer: General Directorate Of State Hydraulic Works/Turkey

Location: Trabzon /Turkey

Description of Work: The purpose of this project is to prepare a detailed feasibility report and to make a detailed design of the dam to be built to provide clean drinking water to the province of Gümüşhane. Within the scope of the project, there is one RCC dam body, pressure steel pipes and clean water treatment plant.

Type of Work: Feasibility Report / Application Project

### **"Surveying, Quantity Estimation Of Work Done In The Site And Determination Of Work Progress And Desing Percentage Of Almar Irrigation Project As Per Work Done In The Site"**

Employer: NWARA/Afghanistan

Location: Almar/ Faryab

Description of Work: Review of Almar Dam projects with a concrete body type and height of 72 meters and control of the contractions made in the site

Type of Work: Inspection Report and Conculancy Work

### **East Black Sea Basin Master Plan Report Making**

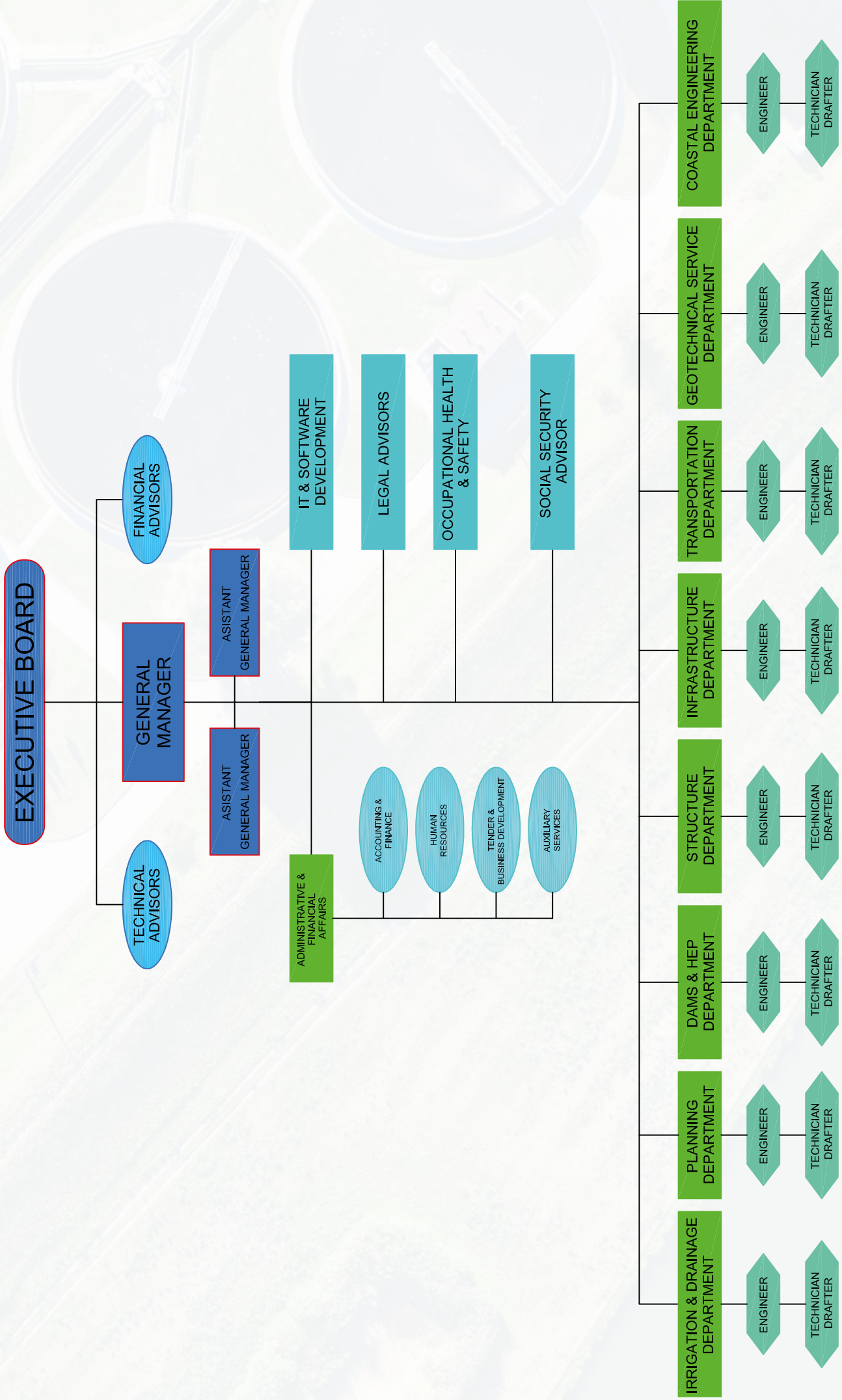
Employer: General Directorate Of State Hydraulic Works/Turkey

Location: Trabzon /Turkey

Description of Work: In the project we have done before, it consists of a dam, HEPP and irrigation network. The criteria we have taken into consideration before detail design and the construction of the project are detailed below. Pre-feasibility studies of more than 300 projects in 15 different cities were conducted for the planning of the water resources of the region

Type of Work: Master Plan Report





## CONSULTANCY AND CONTROL SERVICES

### CONTROL

- Project control
- On site control
- Coordination
- Quality control
- Application control

### CONTRACTOR SELECTION

- Defining selection criteria
- Capability document preparation
- Bids evaluation
- Reporting during the life of the contract

### CONSULTANCY

- Technical advisory
- Program monitor and control
- Quality control
- Equipment and material selection
- Cost control

### PREPARATION OF TENDER DOCUMENTS

- Contract general terms
- Technical requirements
- Quantities and assessments

### SURVEY, PLANNING AND FEASIBILITY STUDY SERVICES

- Irrigation and drainage systems
- Dams and HEPP's
- Agricultural economy and land resource improvement
- Drinking, potable and industrial water supply and distribution
- Sewerage and rain water drainage systems
- Drinking water cleaning facilities
- Wastewater cleaning facilities
- Environmental Technologies and environmental impact assessment
- Geologic and geotechnical surveys
- Hydrological and hydro-geologic surveys
- Public housing

## ENGINEERING SERVICES

### IRRIGATION AND DRAINAGE SYSTEMS

- Irrigation dams and weirs
- Open channel, gallery, tunnel, siphon, aqueduct and similar transfer structures
- Piped irrigation systems
- Sprinkling and dripping irrigation systems
- Pumping stations
- Drying facilities

### URBAN INFRASTRUCTURE

- Storage facilities, dams and weirs for water supply
- Transmission lines
- Domestic water treatment facilities
- Domestic water distribution network and storage
- Pumping stations
- Sewerage and rain water network
- Wastewater cleaning facilities
- Solid waste storage facilities

### DAMS AND HEPP'S

- Dams
- Water intakes
- Diversion structures
- Tunnels
- Penstocks
- Hydromechanics equipments
- Hydro-Electric Power Plants
- Switch yard

### TRANSPORTATION STRUCTURES

- Bridges and highway passages
- Tunnels, Viaducts and cut-cover structures
- Metro stations
- Underpasses and crossovers
- Airport terminal buildings

### STEEL STRUCTURES

- Industrial Buildings
- Plane and spatial frame roof systems
- Hangar and warehouse structures
- Towers
- Bridges

### REINFORCED CONCRETE BUILDINGS AND OTHER STRUCTURES

- Housing, hotel, hospital and business centers
- Tall buildings
- Repair and strengthening
- Industrial buildings
- Chimneys and towers
- Silo and bunkers
- Military structures
- Shallow and pile foundations
- Machinery foundation
- Retaining structures and anchorages



# SEPA

MÜHENDİSLİK & MÜŞAVİRLİK  
ENGINEERING & CONSULTING



# SEPA

0 312 473 06 47

0 312 473 06 48 (fax)

sepa@sepaproje.com

www.sepaproje.com

Fatih Sultan Mah. 2366 Sk. No:13 Etimesgut / ANKARA